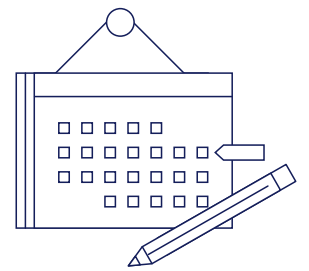


Weekly Schedule



Monday - Thursday

- 8AM** Light Breakfast
- 9AM** Shadowing
- 5 hours per day
 - Switch specialties every week
 - Typically 2 students per department
 - Free time
- 6PM** Group Meal (Monday & Wednesday only)



Friday

- 8AM** Light Breakfast
- 9AM** Cultural Excursion
- Weekly group outing
 - Organized by your Site Manager
 - For example, hiking or visiting a nearby city



Saturday- Sunday

- 8AM** Light Breakfast
- 9AM** Free time

ACTUAL PROGRAM SCHEDULES MAY VARY (E.G. ADJUSTMENTS FOR HOSPITAL AVAILABILITY AND LOCAL HOLIDAYS).